

XL TIMING PULLEYS

0.200" Trapezoidal Pitch

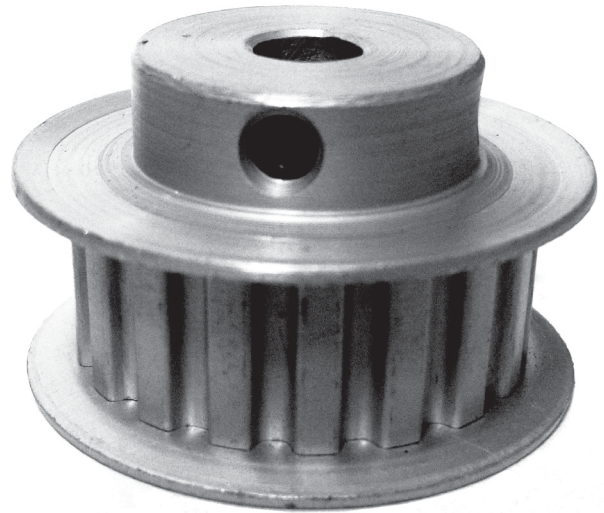
For 3/8" Wide Belts

Hub and Flanges

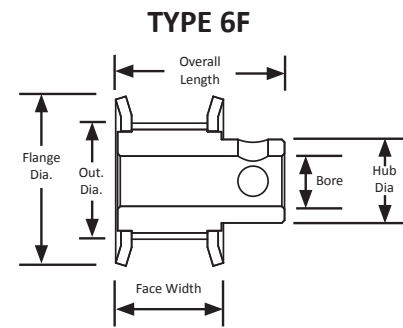
Aluminum

Clear Anodized

Finished Bore



Part Number	No. of Teeth	Type	Pitch Dia. (in)	Out. Dia. (in)	Flange Dia. (in)	Bore (in)	Face Width (in)	Overall Length (in)	Hub Dia. (in)	Set Screw
18XL037-6FA6	18	6F	1.146	1.126	1.375	0.500	0.563	0.812	0.812	2 x 8-32 @ 90°
19XL037-6FA3	19	6F	1.210	1.190	1.437	0.250	0.563	0.812	0.875	2 x 8-32 @ 90°
19XL037-6FA4	19	6F	1.210	1.190	1.437	0.313	0.563	0.812	0.875	2 x 8-32 @ 90°
19XL037-6FA5	19	6F	1.210	1.190	1.437	0.375	0.563	0.812	0.875	2 x 8-32 @ 90°
19XL037-6FA6	19	6F	1.210	1.190	1.437	0.500	0.563	0.812	0.875	2 x 8-32 @ 90°
20XL037-6FA3	20	6F	1.273	1.253	1.500	0.250	0.563	0.875	0.937	2 x 8-32 @ 90°
20XL037-6FA4	20	6F	1.273	1.253	1.500	0.313	0.563	0.875	0.937	2 x 8-32 @ 90°
20XL037-6FA5	20	6F	1.273	1.253	1.500	0.375	0.563	0.875	0.937	2 x 10-32 @ 90°
20XL037-6FA6	20	6F	1.273	1.253	1.500	0.500	0.563	0.875	0.937	2 x 10-32 @ 90°
21XL037-6FA3	21	6F	1.337	1.317	1.563	0.250	0.563	0.875	1.000	2 x 8-32 @ 90°
21XL037-6FA4	21	6F	1.337	1.317	1.563	0.313	0.563	0.875	1.000	2 x 8-32 @ 90°
21XL037-6FA5	21	6F	1.337	1.317	1.563	0.375	0.563	0.875	1.000	2 x 10-32 @ 90°
21XL037-6FA6	21	6F	1.337	1.317	1.563	0.500	0.563	0.875	1.000	2 x 10-32 @ 90°
22XL037-6FA3	22	6F	1.401	1.381	1.625	0.250	0.563	0.875	1.000	2 x 8-32 @ 90°
22XL037-6FA4	22	6F	1.401	1.381	1.625	0.313	0.563	0.875	1.000	2 x 8-32 @ 90°
22XL037-6FA5	22	6F	1.401	1.381	1.625	0.375	0.563	0.875	1.000	2 x 10-32 @ 90°
22XL037-6FA6	22	6F	1.401	1.381	1.625	0.500	0.563	0.875	1.000	2 x 10-32 @ 90°
23XL037-6FA3	23	6F	1.464	1.444	1.688	0.250	0.563	0.875	1.063	2 x 8-32 @ 90°
23XL037-6FA4	23	6F	1.464	1.444	1.688	0.313	0.563	0.875	1.000	2 x 8-32 @ 90°
23XL037-6FA5	23	6F	1.464	1.444	1.688	0.375	0.563	0.875	1.000	2 x 10-32 @ 90°
24XL037-6FA3	24	6F	1.528	1.508	1.750	0.250	0.563	0.906	1.063	2 x 8-32 @ 90°
24XL037-6FA4	24	6F	1.528	1.508	1.750	0.313	0.563	0.906	1.063	2 x 8-32 @ 90°
24XL037-6FA5	24	6F	1.528	1.508	1.750	0.375	0.563	0.906	1.063	2 x 10-32 @ 90°
24XL037-6FA6	24	6F	1.528	1.508	1.750	0.500	0.563	0.906	1.063	2 x 10-32 @ 90°
25XL037-6FA3	25	6F	1.592	1.572	1.812	0.250	0.563	0.906	1.094	2 x 8-32 @ 90°
25XL037-6FA4	25	6F	1.592	1.572	1.812	0.313	0.563	0.906	1.094	2 x 8-32 @ 90°
25XL037-6FA5	25	6F	1.592	1.572	1.812	0.375	0.563	0.906	1.094	2 x 10-32 @ 90°
25XL037-6FA6	25	6F	1.592	1.572	1.812	0.500	0.563	0.906	1.094	2 x 10-32 @ 90°



B&B Manufacturing offers an online, interactive competitor's part number cross reference tool on our website.

This powerful cross reference tool is intended to be used to determine an equivalent B&B Manufacturing part number given another manufacturer's part number. Most major precision mechanical component and power transmission manufacturers and distributors are included in this utility.

For this and other useful tools, visit our website at:

www.bbman.com